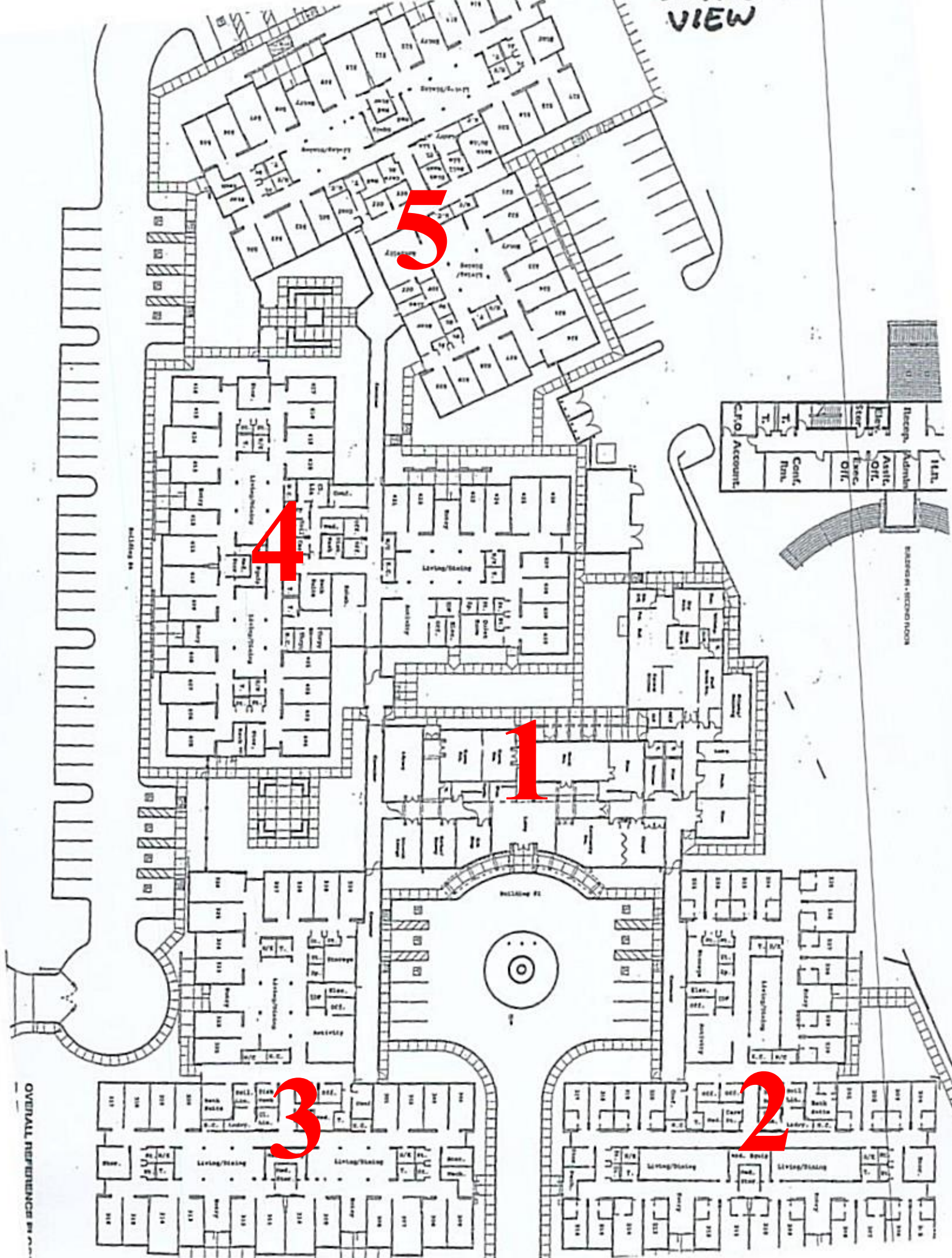


CORNER VIEW



5

4

1

3

2

OVERALL REFERENCE BY

STRUCTURAL RATING NOTE:

- A. All bearing walls and columns shall be 1-hour rated per requirements of the V-A construction type.
- B. Roof/ceiling assembly shall be 1-hour rated per requirements of the V-A construction type.
- C. Refer to UL rated assembly details on sheet G-011 for additional information.

CODE GENERAL NOTES:

- A. Fire Department access and water supply shall be in place prior to commencement of vertical construction.
- B. See reflected ceiling plans and electrical drawings for exit signs.
- C. All exits to be openable from the inside without the use of a key or any special knowledge.
- D. Panic hardware to be provided at each exit door from rooms with an occupant load of more than 50, including main corridor exterior doors.
- E. All utilities will be placed underground.
- F. Special structural inspections may be required. Review general structural notes for requirements.
- G. Special electrical inspections may be required. Review electrical drawings and specifications for requirements.
- H. Fire sprinklers shall comply with NFPA 13.
- I. Fire alarm systems shall comply with NFPA 72.
- J. Submit all required drawings and information to A.H.J. Prior to commencement of any related work. Obtain approval of completed systems prior to final acceptance.

CODE PLAN ORIENTATION NOTES:

- A. This code plan depicts Buildings A and E
- B. Building D is a mirror version of this code plan

CODE PLAN LEGEND

I-2 OCCUPANCY GENERAL SPACES OCCUPANT LOAD: 100 SF/OCC.

I-2 OCCUPANCY SLEEPING ROOMS OCCUPANT LOAD: 120 SF/OCC.

I-2 OCCUPANCY ASSEMBLY SPACES OCCUPANT LOAD: 15 SF/OCC.

S-2 OCCUPANCY (ACCESSORY) STORAGE SPACES OCCUPANT LOAD: 300 SF/OCC.

— 1 — 1 — 1 — 1-HOUR RATED WALL ASSEMBLY

— S — S — S — S — SMOKE PARTITION

— A — SMOKE COMPARTMENT SEPARATION WALL

➔ EGRESS EXIT

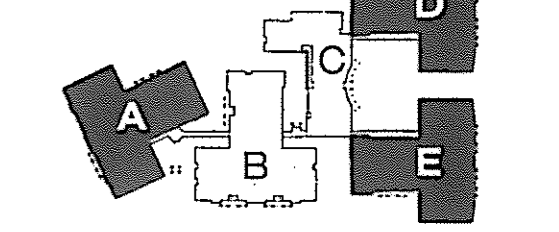
--- PATH OF EGRESS FOR FARTHEST POINT FROM EXIT



Arizona Department of Veterans' Services  
Arizona State Veterans' Home  
Tucson  
Federal Project Number: RAI 04-002

CLIENT CONTACT  
Arizona Dept. of Veterans' Services  
3839 N. Third Street,  
Suite 200  
Phoenix, AZ 85012

KEY PLAN



Professional seal for H. Neil Terry, State of Arizona, No. 18963, expires 08/30/10.

2009 This third copy of a stamped drawing is an instrument of service and the property of the State of Arizona. It is loaned to the recipient for their use only. The recipient shall not be responsible for any alterations, modifications, or changes made to this drawing by any party other than the design professional. The design professional shall be held liable for the design and any errors or omissions in this drawing, and shall not be held responsible for any other drawings or information provided to the recipient without the design professional's written consent. Publication by any method in whole or in part is prohibited without the design professional's written consent. Publication by any method in whole or in part is prohibited without the design professional's written consent. Information, approach or construction derived from this drawing shall be the responsibility of the user.

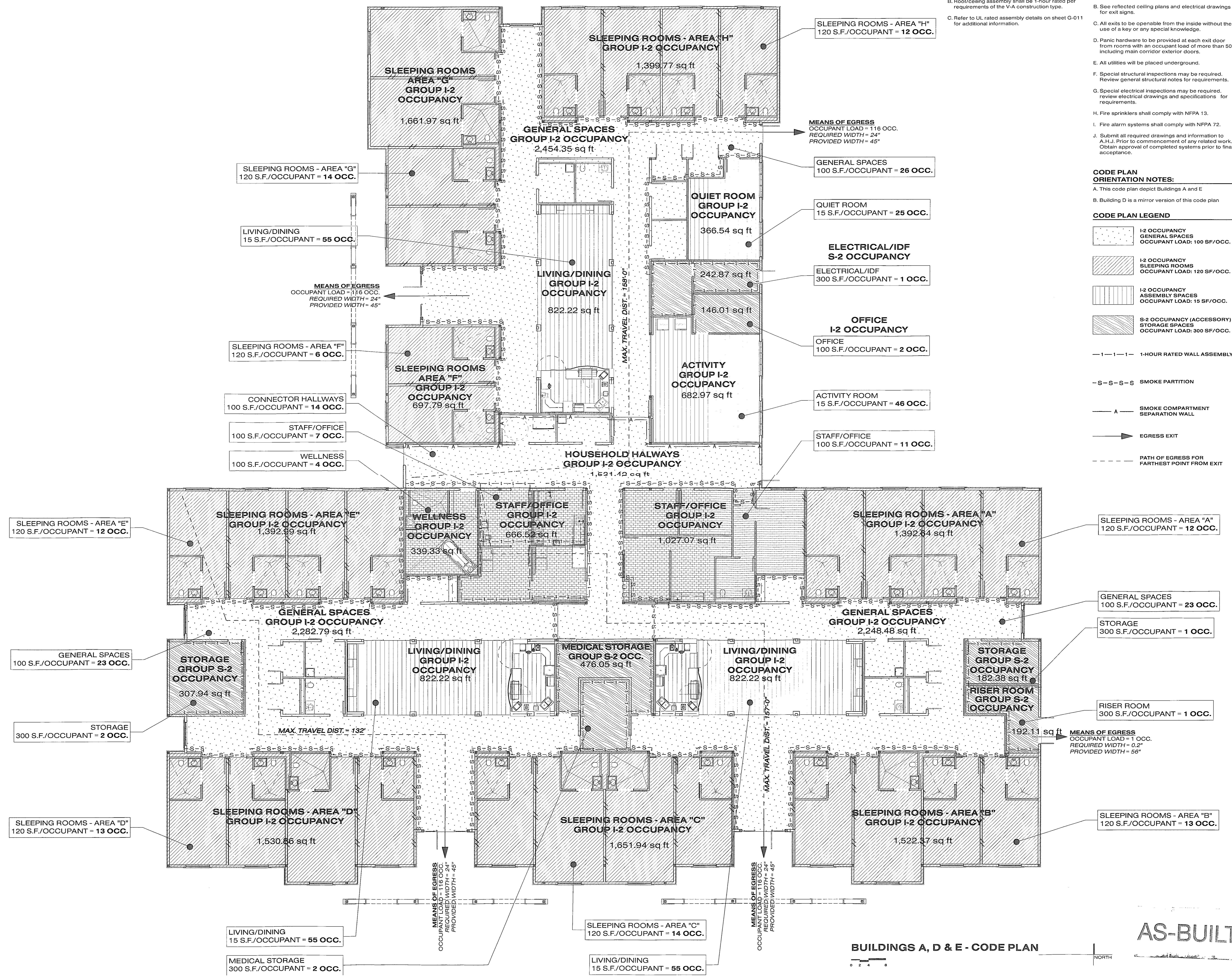
PROJECT NUMBER 2009\_291  
DATE OF ISSUE 04.05.2010  
REVISION NO. DATE

PROJECT PHASE construction documents

PROJECT TEAM Kolejka  
DRAWN BY nl, bl, ak, ds, sc, ia

SHEET CONTENTS Code Plan - Bldgs. A, D & E

SHEET NO. G-007



BUILDINGS A, D & E - CODE PLAN

AS-BUILT



CODE GENERAL NOTES:

- A. Fire Department access and water supply shall be in place prior to commencement of vertical construction.
- B. See reflected ceiling plans and electrical drawings for exit signs.
- C. All exits to be openable from the inside without the use of a key or any special knowledge.
- D. Panic hardware to be provided at each exit door from rooms with an occupant load of more than 50, including main corridor exterior doors.
- E. All utilities will be placed underground.
- F. Special structural inspections may be required. Review general structural notes for requirements.
- G. Special electrical inspections may be required. Review electrical drawings and specifications for requirements.
- H. Fire sprinklers shall comply with NFPA 13.
- I. Fire alarm systems shall comply with NFPA 72.
- J. Submit all required drawings and information to A.H.J. Prior to commencement of any related work. Obtain approval of completed systems prior to final acceptance.

STRUCTURAL RATING NOTE:

- A. All bearing walls and columns shall be 1-hour rated per requirements of the V-A construction type.
- B. Roof/ceiling assembly shall be 1-hour rated per requirements of the V-A construction type.
- C. Refer to UL rated assembly details on sheet G-011 for additional information.

CODE PLAN LEGEND

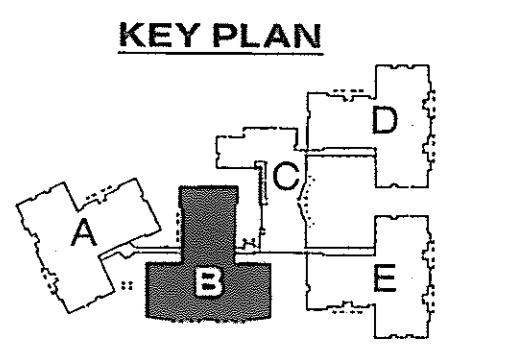
- I-2 OCCUPANCY GENERAL SPACES OCCUPANT LOAD: 100 SF/OCC.
- I-2 OCCUPANCY SLEEPING ROOMS OCCUPANT LOAD: 120 SF/OCC.
- I-2 OCCUPANCY ASSEMBLY SPACES OCCUPANT LOAD: 15 SF/OCC.
- S-2 OCCUPANCY (ACCESSORY) STORAGE SPACES OCCUPANT LOAD: 300 SF/OCC.
- 1-1-1-1 1-HOUR RATED WALL ASSEMBLY
- S-S-S-S SMOKE PARTITION
- A SMOKE COMPARTMENT SEPARATION WALL
- ▶ EGRESS EXIT
- - - - - PATH OF EGRESS FOR FARTHEST POINT FROM EXIT



Arizona Department of Veterans' Services  
Arizona State Veterans' Home  
Tucson

Federal Project Number: RA1 04-002

CLIENT CONTACT  
Arizona Dept. of Veterans' Services  
3839 N. Third Street,  
Suite 200  
Phoenix, AZ 85012



18963  
H. NEIL TERRY  
REGISTERED ARCHITECT  
ARIZONA, U.S.A.  
expires 09/30/10

2009 the ARCH plan or electronic drawing is an instrument of service and the property of the Orcutt Winslow Planning and shall remain their property. The design professional shall not be responsible for any construction requirements or conditions not shown in this drawing or any other drawings or specifications unless it is specifically noted on this drawing or any other drawings or specifications. The design professional's work is subject to the professional seal of the design professional's seal and shall be used in accordance with the information provided or construction details from this drawing and the applicable code.

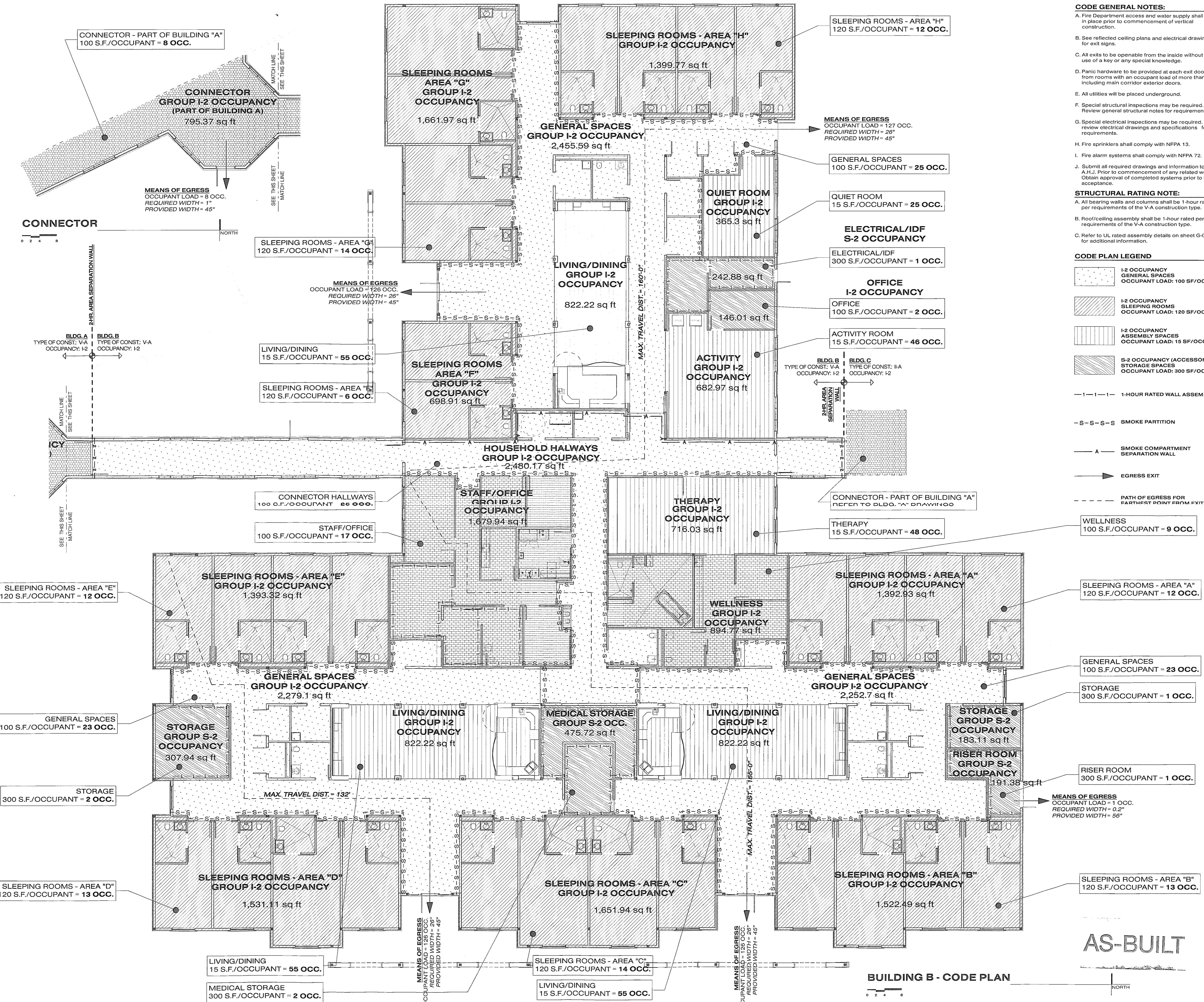
PROJECT NUMBER  
2009\_291  
DATE OF ISSUE  
04.05.2010  
REVISION NO. DATE

PROJECT PHASE  
construction documents

PROJECT TEAM DRAWN BY  
Kolejka ni, bl, ak,  
ds, sc, ia

SHEET CONTENTS  
Code Plan - Bldg. B

SHEET NO.  
G-008



BUILDING B - CODE PLAN

AS-BUILT

CONNECTOR



BLDG. A TYPE OF CONST.: V-A OCCUPANCY: I-2  
BLDG. B TYPE OF CONST.: V-A OCCUPANCY: I-2

BLDG. B TYPE OF CONST.: IIA OCCUPANCY: I-2  
BLDG. C TYPE OF CONST.: IIA OCCUPANCY: I-2

NORTH

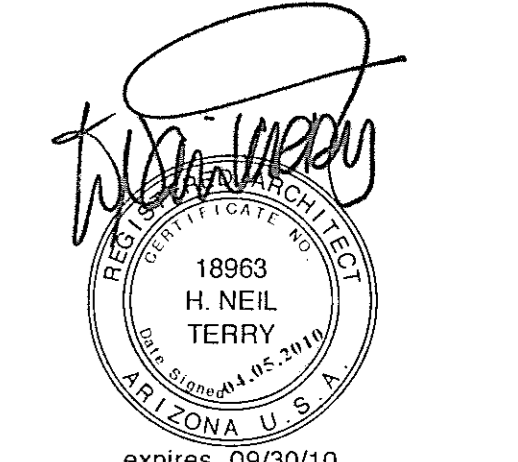
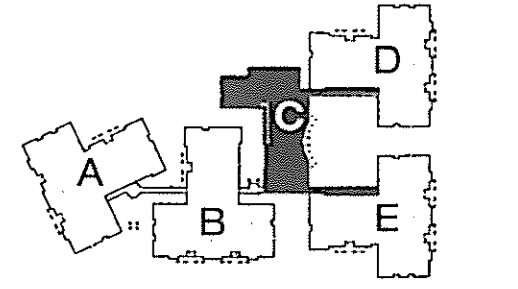
AS-BUILT



Arizona Department of Veterans' Services
Arizona State Veterans' Home
Tucson

CLIENT CONTACT
Arizona Dept. of Veterans' Services
3839 N. Third Street, Suite 200
Phoenix, AZ 85012

KEY PLAN



2009 this shall stay or electronic sharing to an
instrument of service and the property of the Client
Veterans' Partnership and shall remain their property.

PROJECT NUMBER
2009\_291
DATE OF ISSUE
04.05.2010
REVISION NO. DATE

PROJECT PHASE
construction documents

PROJECT TEAM
Kolejka ni, bl, ak, ds, sc, ia

SHEET CONTENTS
Code Plan - Bldg. C
1st Floor

SHEET NO.
G-009

STRUCTURAL RATING NOTE:

- A. All bearing walls and columns shall be 1-hour rated per requirements of the II-A construction type.
B. Roof/ceiling and floor/ceiling assemblies shall be 1-hour rated per requirements of the II-A construction type.
C. Refer to UL rated assembly details on sheets G-012 and G-013 for additional information.

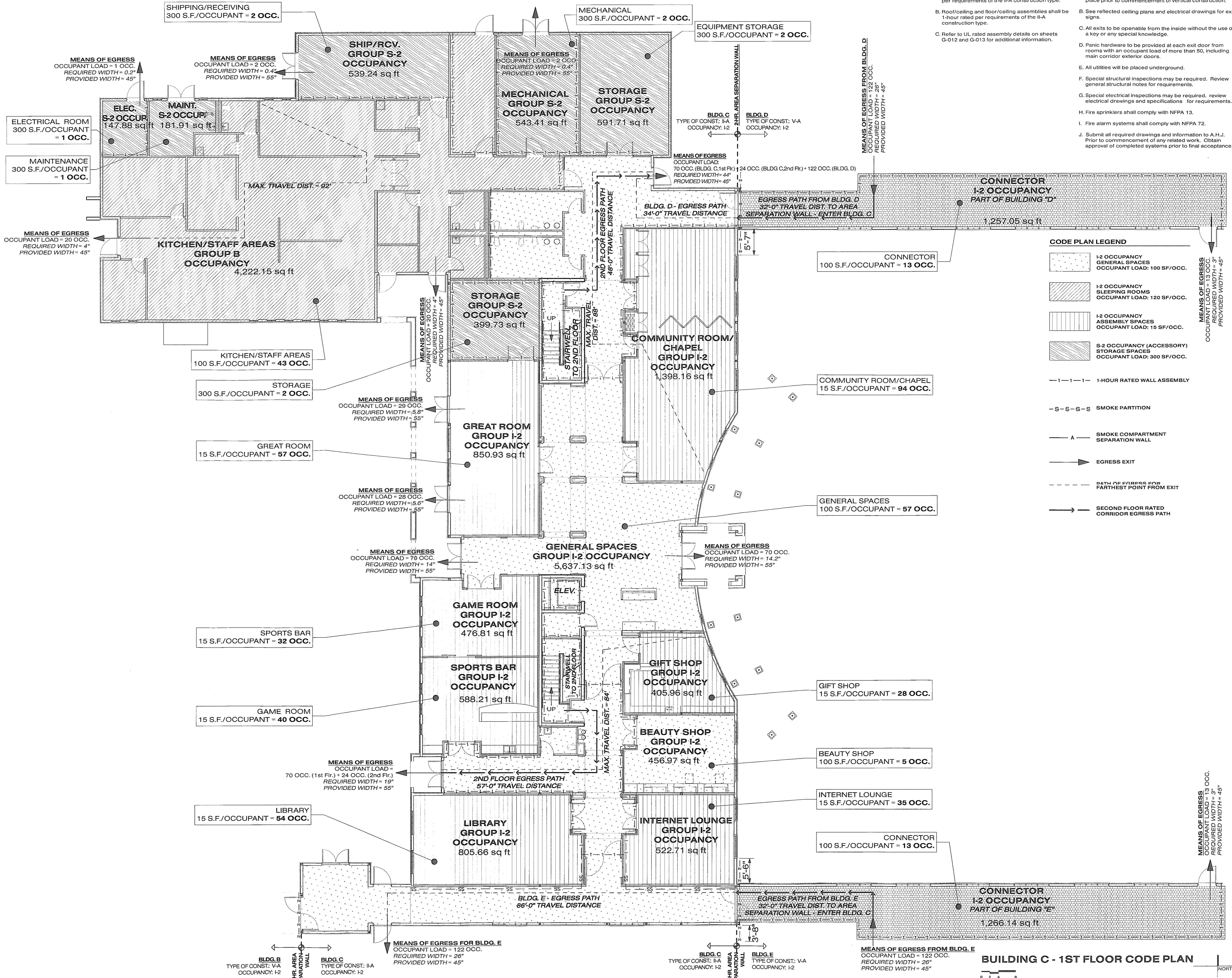
CODE GENERAL NOTES:

- A. Fire Department access and water supply shall be in place prior to commencement of vertical construction.
B. See reflected ceiling plans and electrical drawings for exit signs.
C. All exits to be openable from the inside without the use of a key or any special knowledge.
D. Panic hardware to be provided at each exit door from rooms with an occupant load of more than 50, including main corridor exterior doors.
E. All utilities will be placed underground.
F. Special structural inspections may be required. Review general structural notes for requirements.
G. Special electrical inspections may be required. review electrical drawings and specifications for requirements.
H. Fire sprinklers shall comply with NFPA 13.
I. Fire alarm systems shall comply with NFPA 72.
J. Submit all required drawings and information to A.H.J. Prior to commencement of any related work. Obtain approval of completed systems prior to final acceptance.

CODE PLAN LEGEND

- I-2 OCCUPANCY GENERAL SPACES OCCUPANT LOAD: 100 SF/OCC.
I-2 OCCUPANCY SLEEPING ROOMS OCCUPANT LOAD: 120 SF/OCC.
I-2 OCCUPANCY ASSEMBLY SPACES OCCUPANT LOAD: 15 SF/OCC.
S-2 OCCUPANCY (ACCESSORY) STORAGE SPACES OCCUPANT LOAD: 300 SF/OCC.
1-1-1-1 1-HOUR RATED WALL ASSEMBLY
-S-S-S-S SMOKE PARTITION
A SMOKE COMPARTMENT SEPARATION WALL
EGRESS EXIT
PATH OF EGRESS FOR FARTHEST POINT FOR EXIT
SECOND FLOOR RATED CORRIDOR EGRESS PATH

BUILDING C - 1ST FLOOR CODE PLAN



MEANS OF EGRESS OCCUPANT LOAD = 1 OCC. REQUIRED WIDTH = 0.2' PROVIDED WIDTH = 45"

SHIPPING/RECEIVING 300 S.F./OCCUPANT = 2 OCC.

MECHANICAL 300 S.F./OCCUPANT = 2 OCC.

EQUIPMENT STORAGE 300 S.F./OCCUPANT = 2 OCC.

SHIP/RCV GROUP S-2 OCCUPANCY 539.24 sq ft

MECHANICAL GROUP S-2 OCCUPANCY 543.41 sq ft

STORAGE GROUP S-2 OCCUPANCY 591.71 sq ft

ELEC. S-2 OCCUP 147.88 sq ft

MAINT. S-2 OCCUP 181.91 sq ft

ELECTRICAL ROOM 300 S.F./OCCUPANT = 1 OCC.

MAINTENANCE 300 S.F./OCCUPANT = 1 OCC.

KITCHEN/STAFF AREAS GROUP B OCCUPANCY 4,222.15 sq ft

MEANS OF EGRESS OCCUPANT LOAD = 20 OCC. REQUIRED WIDTH = 4" PROVIDED WIDTH = 45"

STORAGE GROUP S-2 OCCUPANCY 399.73 sq ft

COMMUNITY ROOM/CHAPEL GROUP I-2 OCCUPANCY 1,398.16 sq ft

CONNECTOR 100 S.F./OCCUPANT = 13 OCC.

KITCHEN/STAFF AREAS 100 S.F./OCCUPANT = 43 OCC.

STORAGE 300 S.F./OCCUPANT = 2 OCC.

GREAT ROOM GROUP I-2 OCCUPANCY 850.93 sq ft

GREAT ROOM 15 S.F./OCCUPANT = 57 OCC.

MEANS OF EGRESS OCCUPANT LOAD = 29 OCC. REQUIRED WIDTH = 5.8" PROVIDED WIDTH = 55"

GENERAL SPACES GROUP I-2 OCCUPANCY 5,637.13 sq ft

GENERAL SPACES 100 S.F./OCCUPANT = 57 OCC.

GAME ROOM GROUP I-2 OCCUPANCY 476.81 sq ft

SPORTS BAR 15 S.F./OCCUPANT = 32 OCC.

SPORTS BAR GROUP I-2 OCCUPANCY 588.21 sq ft

GAME ROOM 15 S.F./OCCUPANT = 40 OCC.

GIFT SHOP GROUP I-2 OCCUPANCY 405.96 sq ft

GIFT SHOP 15 S.F./OCCUPANT = 28 OCC.

BEAUTY SHOP GROUP I-2 OCCUPANCY 456.97 sq ft

BEAUTY SHOP 100 S.F./OCCUPANT = 5 OCC.

LIBRARY GROUP I-2 OCCUPANCY 805.66 sq ft

LIBRARY 15 S.F./OCCUPANT = 54 OCC.

INTERNET LOUNGE GROUP I-2 OCCUPANCY 522.71 sq ft

INTERNET LOUNGE 15 S.F./OCCUPANT = 35 OCC.

CONNECTOR 100 S.F./OCCUPANT = 13 OCC.

CONNECTOR I-2 OCCUPANCY PART OF BUILDING 'E' 1,266.14 sq ft

MEANS OF EGRESS OCCUPANT LOAD = 33 OCC. REQUIRED WIDTH = 3" PROVIDED WIDTH = 45"

BLDG. B TYPE OF CONST: V-A OCCUPANCY: I-2

BLDG. C TYPE OF CONST: II-A OCCUPANCY: I-2

BLDG. C TYPE OF CONST: II-A OCCUPANCY: I-2

BLDG. E TYPE OF CONST: V-A OCCUPANCY: I-2

MEANS OF EGRESS FROM BLDG. E OCCUPANT LOAD = 122 OCC. REQUIRED WIDTH = 26" PROVIDED WIDTH = 45"

0 2 4 8

NORTH